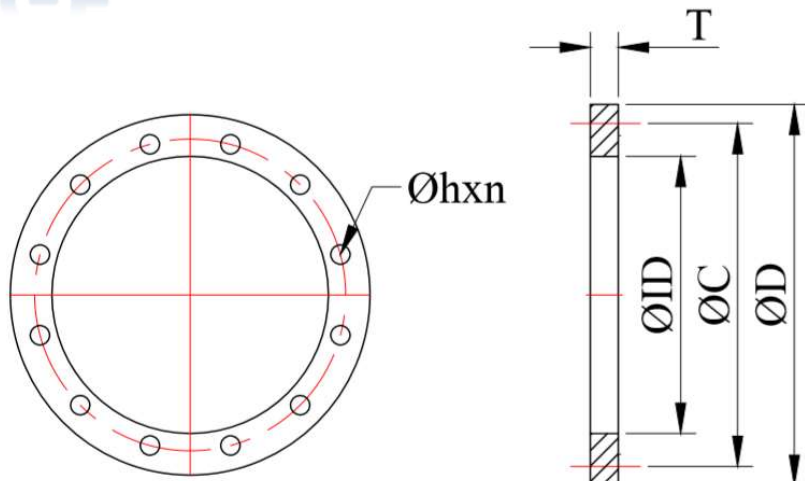


FLANGE



NOMINAL SIZE	DIMENSION FOR (PWA)							Weight*
	ØD	ØID	ØC	T	Ød	n	BOLTING	
80	200	92	160	20	19	8	M16	4 Kg
100	220	118	180	22	19	8	M16	5 Kg
125	250	143	210	22	19	8	M16	6 Kg
150	285	172	240	24	23	8	M20	8 Kg
200	340	223	295	24	23	8	M20	10 Kg
250	395	277	350	26	23	12	M20	13Kg
300	445	328	400	26	23	12	M20	15Kg
350	505	362	460	28	23	16	M20	21.5Kg
400	565	412	515	32	28	16	M24	26Kg
500	670	513	620	38	28	20	M24	37Kg
600	780	614	725	42	31	20	M27	54.5Kg
700	895	715	840	46	31	24	M27	75.5Kg
800	1015	817	950	52	34	24	M30	116.5Kg
900	1115	919	1050	56	34	28	M30	138Kg
1000	1230	1020	1160	62	37	28	M33	181Kg
1200	1455	1224	1380	74	40	32	M36	283Kg
1500	1785	1528	1700	92	43	36	M39	483.5Kg
1800	2115	1824	2020	115	49	44	M45	813.5Kg
2000	2325	2000	2230	127	49	48	M45	845Kg

* Weight เป็นน้ำหนักโดยประมาณ

Notes :Dimension are mm.

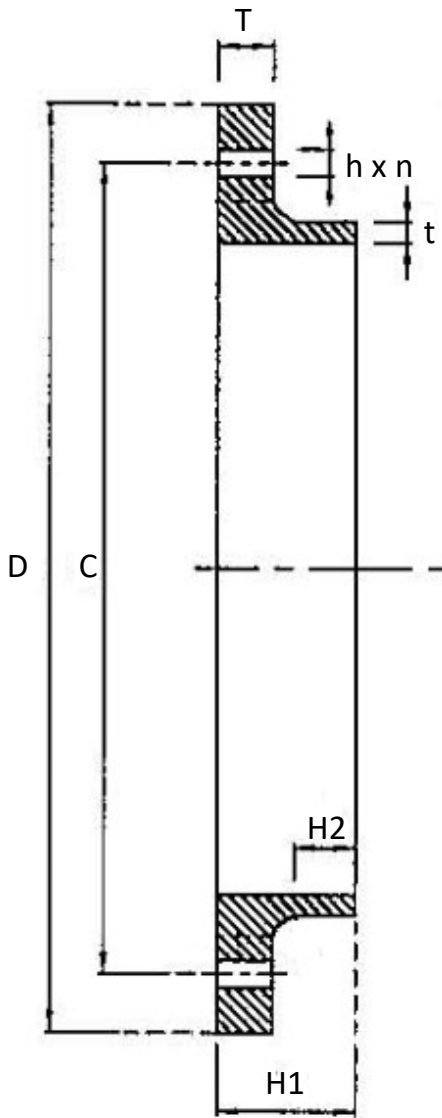


CHAIPONG ENGINEERING CO.,LTD.

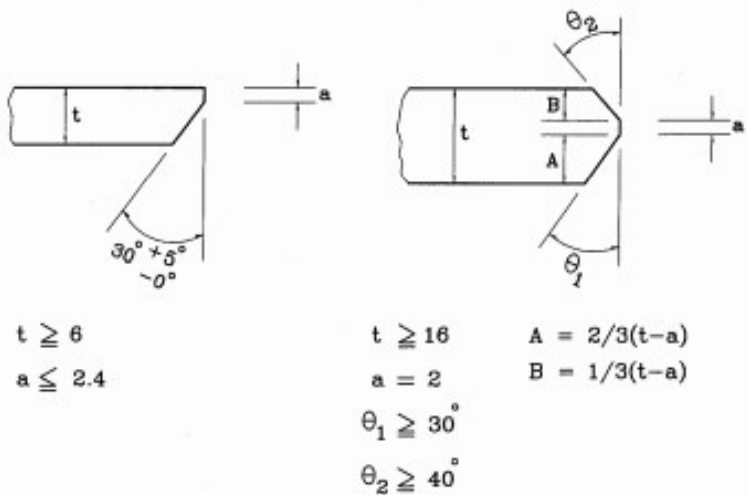
Tel : 02-482-1526-7 Fax : 02-019-8911

email : chaipong_cpe@hotmail.com

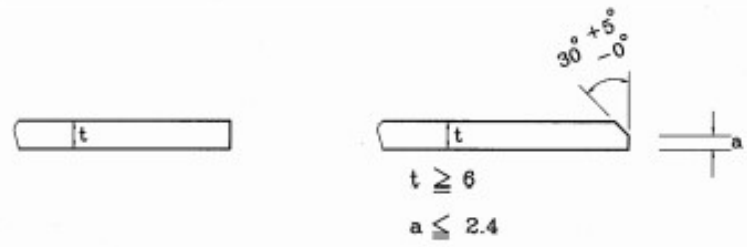
WELD NECK FLANGE



ปลายลมนุ่มสำหรับท่อ 800 มม. และใหญ่กว่า



ปลายเรียบสำหรับท่อ 700 มม. และเล็กกว่า

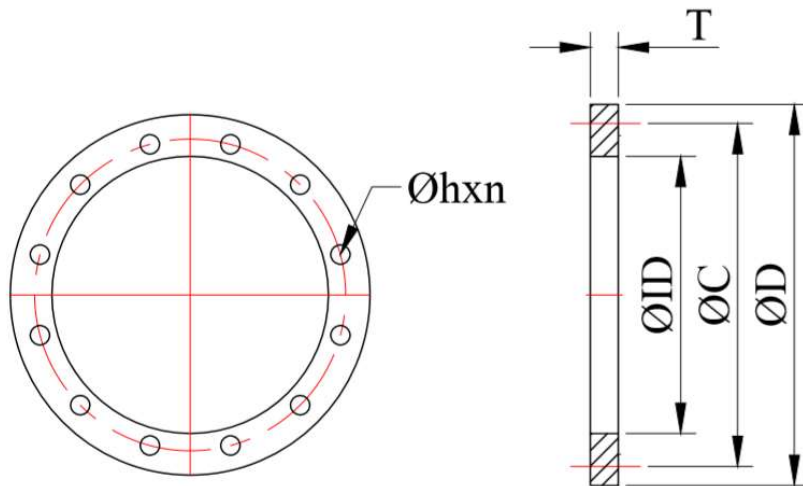


Size	FLANGE DIMENSIONS									
	D	C	T	h	n	OD Pipe	t ใต้ดิน	ทวนดิน	H1	H2
700	895	840	30	30	24	711	6	11	80	18
800	1015	950	32	33	24	813	7.9	12.7	90	18
900	1115	1050	34	33	28	914	7.9	12.7	95	20
1000	1230	1160	34	36	28	1016	9.5	12.7	95	20
1200	1455	1380	38	39	32	1219	11.1	15.9	115	25



CHAIPONG ENGINEERING CO.,LTD.
 Tel : 02-482-1526-7 Fax : 02-019-8911
 email : chaipong_cpe@hotmail.com

FLANGE PN16



Size	FLANGE DIMENSIONS						
	$\varnothing D$	$\varnothing ID$	$\varnothing C$	T	$\varnothing h$	n	BOLTING
80	200	90.5	160	20	18	8	M16
100	220	116	180	22	18	8	M16
150	285	170.5	240	24	22	8	M20
200	340	221.5	295	26	22	12	M20
250	405	276.5	355	28	26	12	M24
300	460	327.5	410	32	26	12	M24
350	520	359	470	35	26	16	M24
400	580	411	525	38	30	16	M27
500	715	513.5	650	46	33	20	M30
600	840	616.5	770	52	36	20	M33
700	910	n	840	60	36	24	M33
800	1025	n	950	68	39	24	M36
900	1125	n	1050	76	39	28	M36
1000	1255	n	1170	84	42	28	M39
1200	1485	n	1390	98	48	32	M45

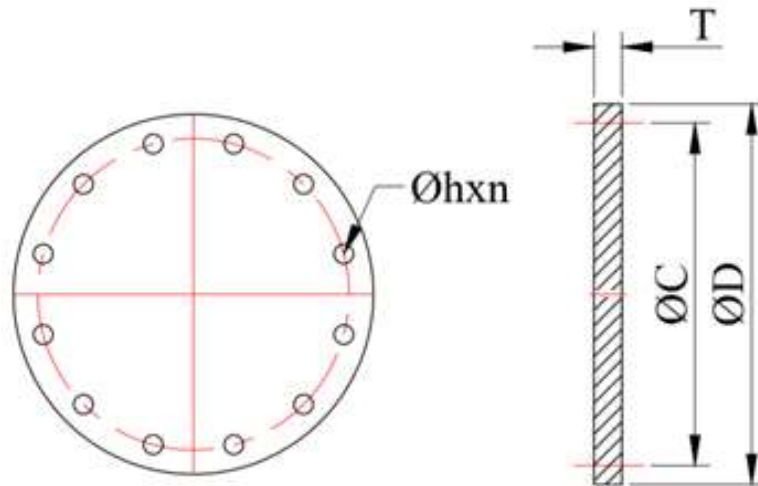


CHAIPONG ENGINEERING CO.,LTD.

Tel : 02-482-1526-7 Fax : 02-019-8911

email : chaipong_cpe@hotmail.com

BLIND FLANGE



NOMINAL SIZE	DIMENSION					
	ØD	ØC	T	Ød	n	BOLTING
80	200	160	20	19	8	M16
100	220	180	22	19	8	M16
125	250	210	22	19	8	M16
150	285	240	24	23	8	M20
200	340	295	24	23	8	M20
250	395	350	26	23	12	M20
300	445	400	26	23	12	M20
350	505	460	28	23	16	M20
400	565	515	32	28	16	M24
500	670	620	38	28	20	M24
600	780	725	42	31	20	M27
700	895	840	46	31	24	M27
800	1015	950	52	34	24	M30
900	1115	1050	56	34	28	M30
1000	1230	1160	62	37	28	M33
1200	1455	1380	74	40	32	M36
1500	1785	1700	92	43	36	M39
1800	2115	2020	115	49	44	M45
2000	2325	2230	127	49	48	M45

Notes :Dimension are mm.

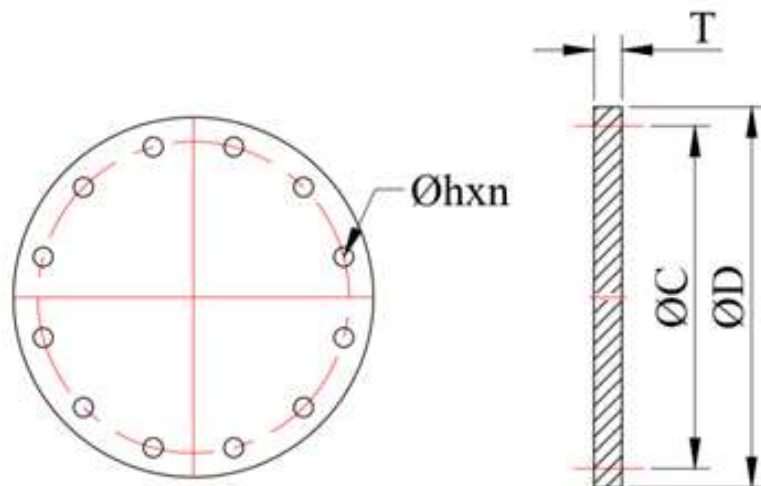


CHAIPONG ENGINEERING CO.,LTD.

Tel : 02-482-1526-7 Fax : 02-019-8911

email : chaipong_cpe@hotmail.com

BLIND FLANGE PN16



Size	FLANGE DIMENSIONS					
	$\varnothing D$	$\varnothing C$	T	$\varnothing h$	n	BOLTING
80	200	160	20	18	8	M16
100	220	180	22	18	8	M16
150	285	240	24	22	8	M20
200	340	295	24	22	12	M20
250	405	355	26	26	12	M24
300	460	410	28	26	12	M24
350	520	470	30	26	16	M24
400	580	525	32	30	16	M27
500	715	650	44	33	20	M30
600	840	770	54	36	20	M33
700	910	840	48	36	24	M33
800	1025	950	52	39	24	M36
900	1125	1050	58	39	28	M36
1000	1255	1170	64	42	28	M39
1200	1485	1390	76	48	32	M45



CHAIPONG ENGINEERING CO.,LTD.

Tel : 02-482-1526-7 Fax : 02-019-8911

email : chaipong_cpe@hotmail.com