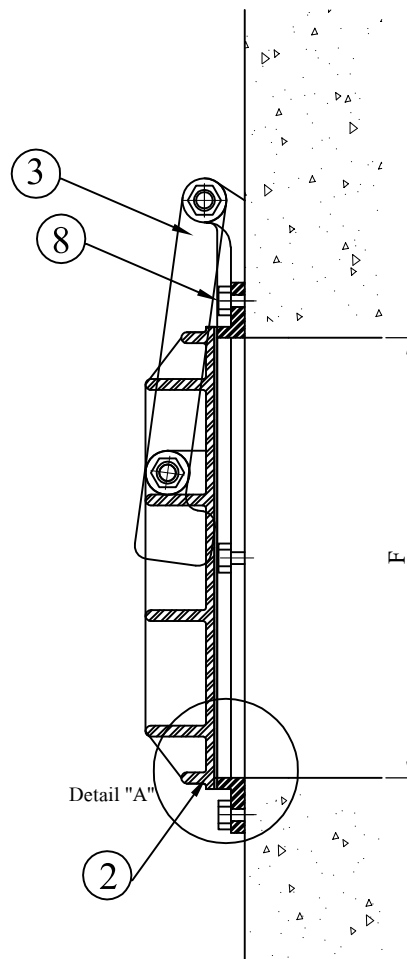
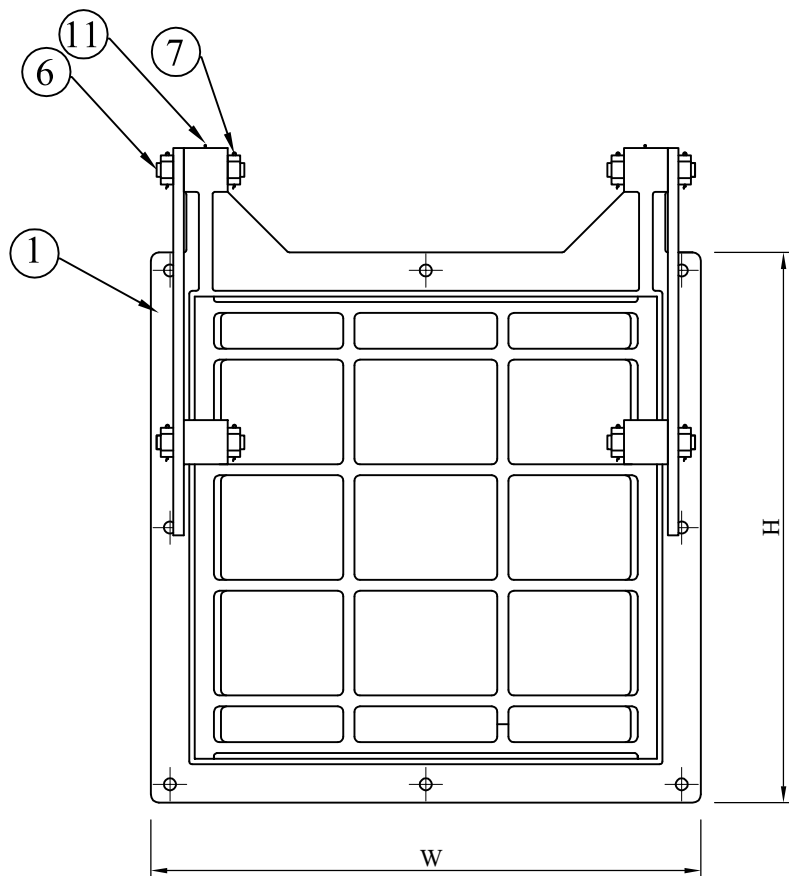
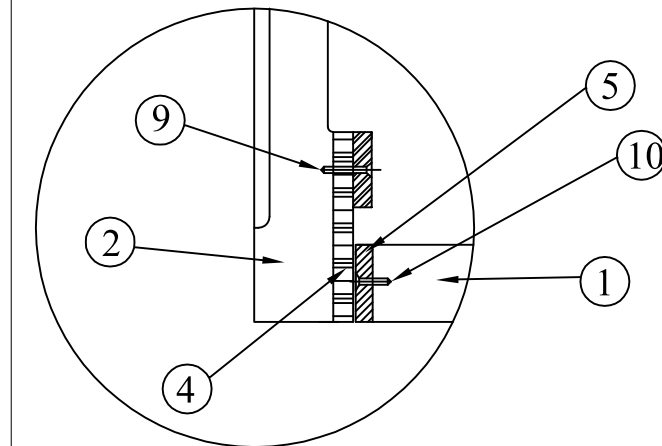


Coating : All surface shall be coated with Coal ter Epoxy
 (black colour) dry film thickness shall not be less than 200
 microns



SECTION



Detail "A"

11	Grease Screw	-	-	2
10	Disc Seat Bolt	Stainless Steel	A 276 Type 304	1set
9	Body Seat Bolt			1set
8	Stud & Nut			4
7	Pin			1set
6	Hinge Pivot			4
5	Body Seat	Bronze	ASTM B-62	1
4	Disc Seat	Rubber(NBR)	EDPM	1
3	Hinge Arm	Ductile Iron	A536 GR.65-45-12	2
2	Disc	Cast Iron	A 126 Class B	1
1	Body			1
NO.	PART NAME	MATERIAL	DESIGNTION	QTY



CHAIPONG ENGINEERING CO.,LTD.

PROJECT : GENERAL

TITLE : FLAP VALVE Size 800x800 mm. (SQUARE)

DRAWN BY : K.preecha

SCALE : No Scale

DESIGNER : CPE

DATE : 25-03-2019

CHECKER :

DRAWNING NO.

APPROVER :

CPE-FVQ-800x800-01